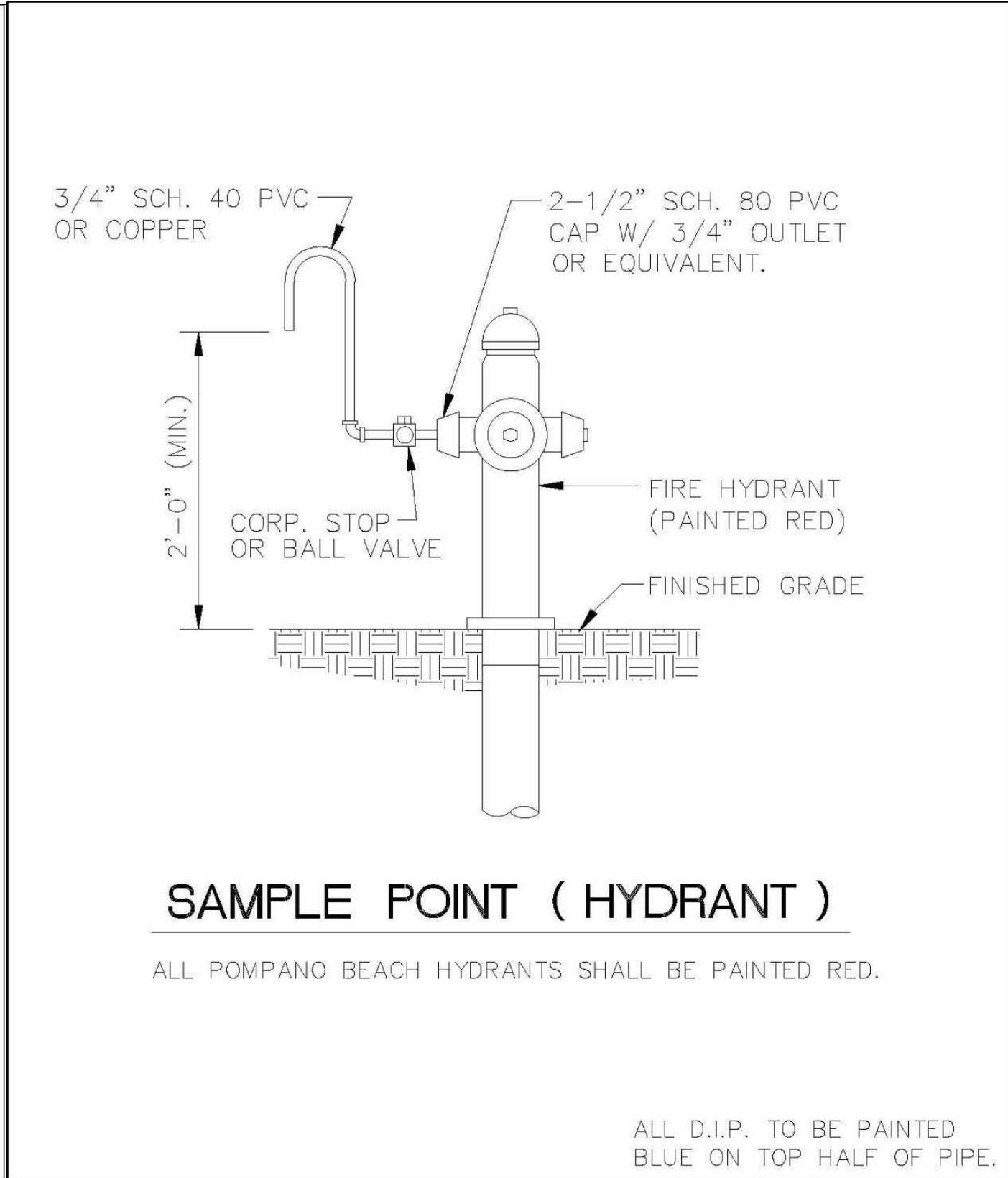


SAMPLE POINT (MAIN)

ALL D.I.P. TO BE PAINTED
BLUE ON TOP HALF OF PIPE.

ENGINEERING STANDARDS 2022			
REVISIONS		ENGINEERING DIVISION	SAMPLE POINT (MAIN)
BY	DATE		
S.S.	04-2005	CITY OF POMPAÑO BEACH	DATE: MAY 2022 DWG. NO. 100-1
SCALE: N.T.S.			

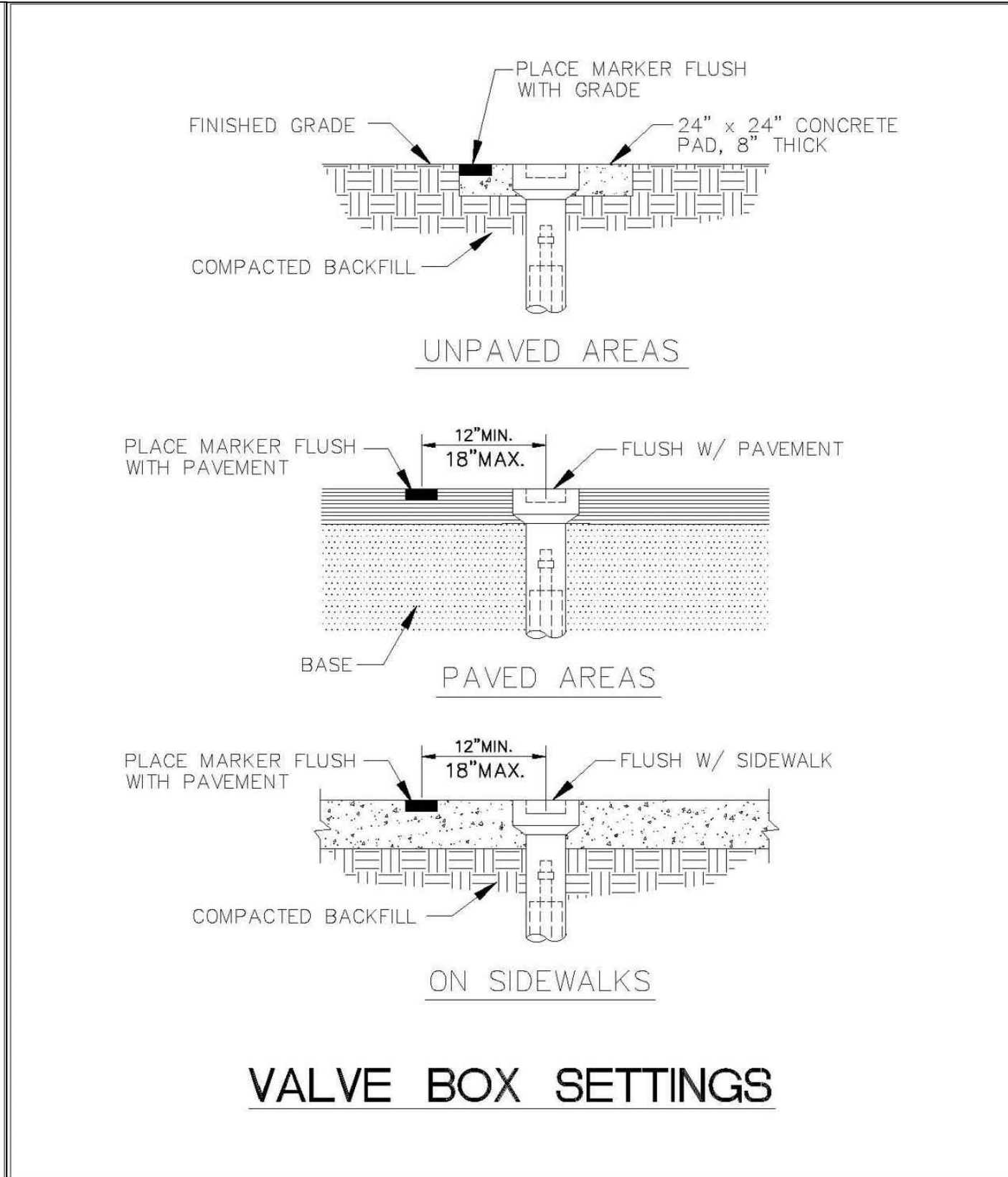


SAMPLE POINT (HYDRANT)

ALL POMPAÑO BEACH HYDRANTS SHALL BE PAINTED RED.

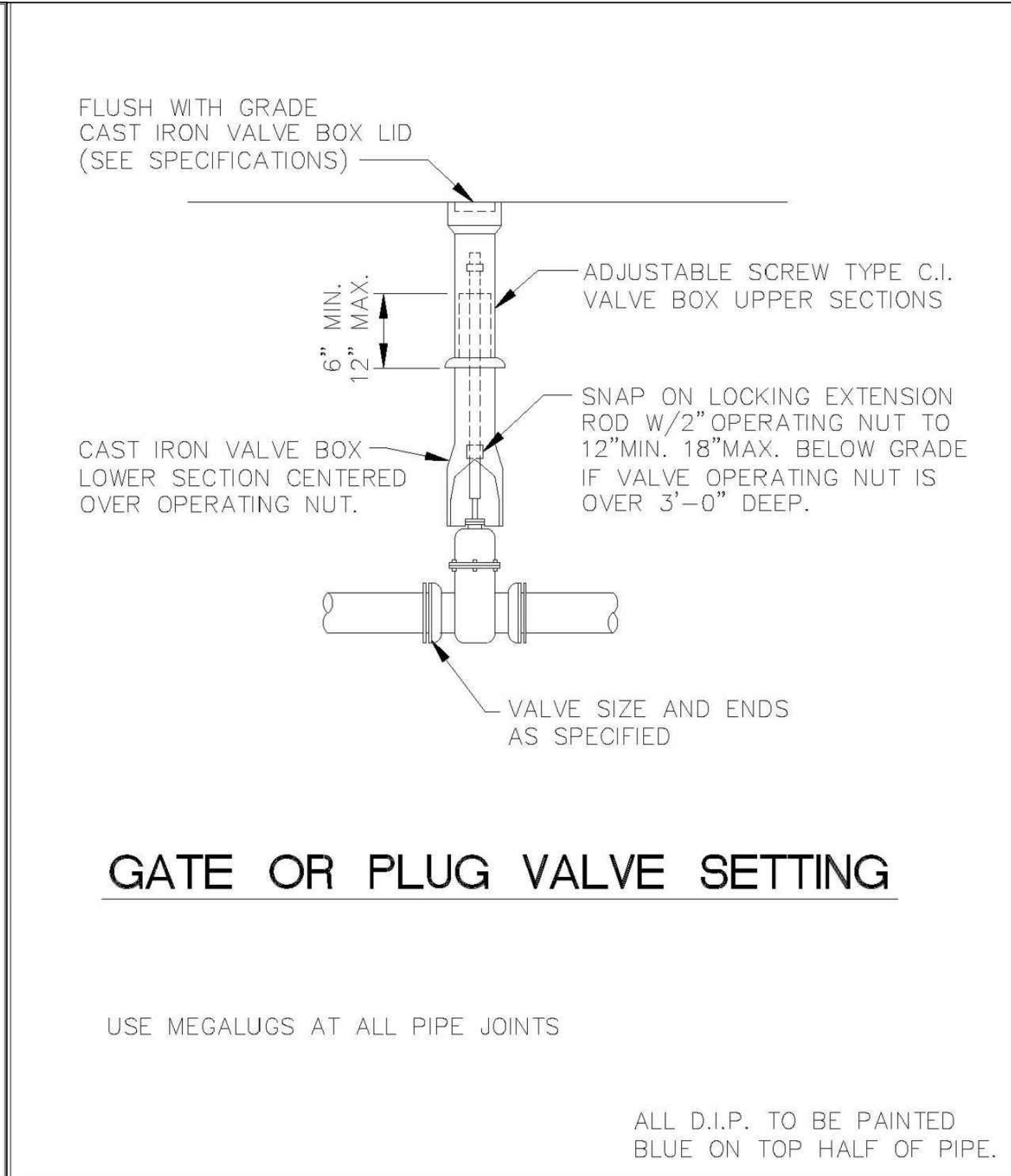
ALL D.I.P. TO BE PAINTED
BLUE ON TOP HALF OF PIPE.

ENGINEERING STANDARDS 2022			
REVISIONS		ENGINEERING DIVISION	SAMPLE POINT (HYDRANT)
BY	DATE		
S.S.	04-2005	CITY OF POMPAÑO BEACH	DATE: MAY 2022 DWG. NO. 101-1
SCALE: N.T.S.			



VALVE BOX SETTINGS

ENGINEERING STANDARDS 2022			
REVISIONS		ENGINEERING DIVISION	VALVE BOX SETTINGS
BY	DATE		
S.S.	04-2005	CITY OF POMPAÑO BEACH	DATE: MAY 2022 DWG. NO. 102-1
SCALE: N.T.S.			

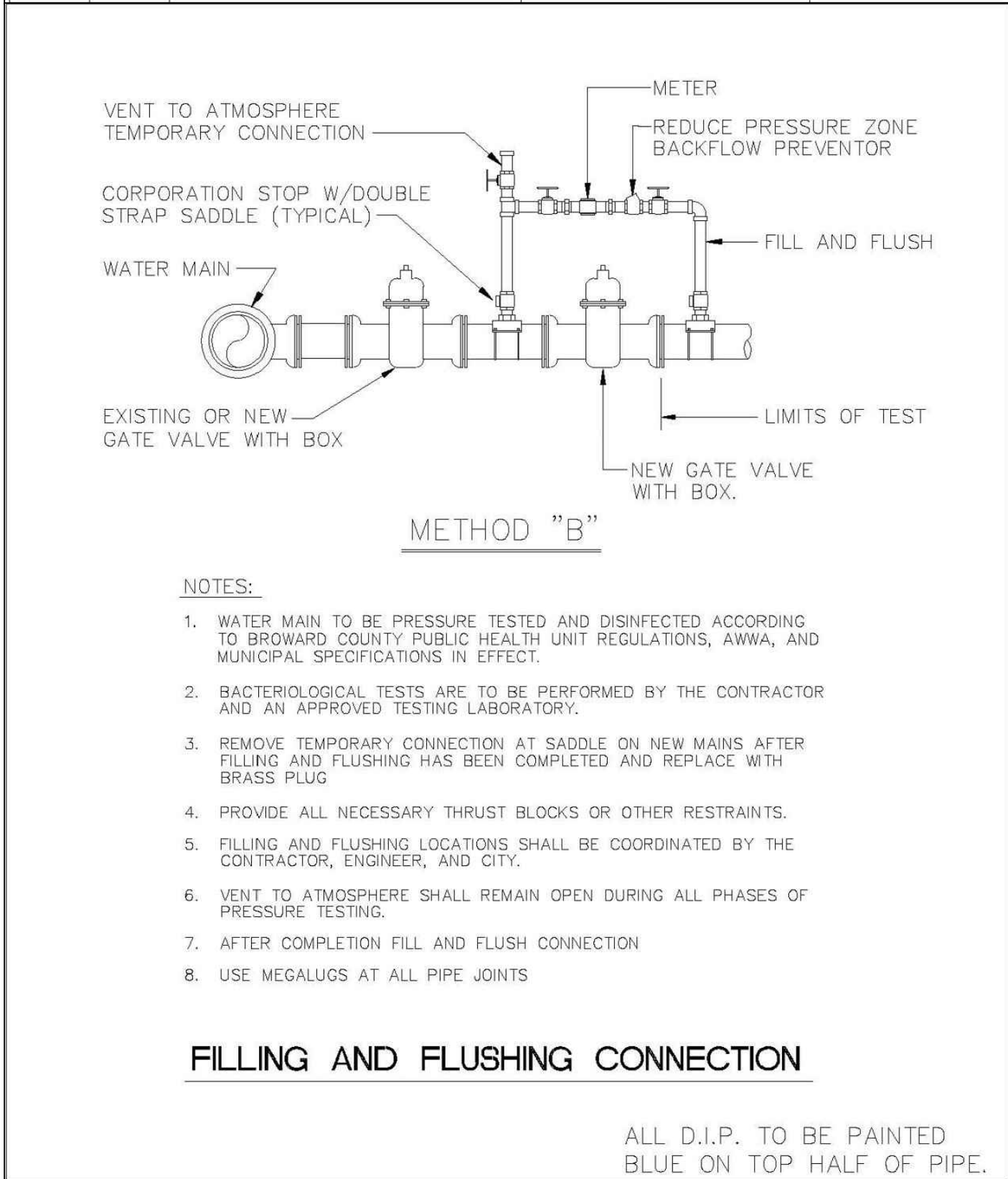


GATE OR PLUG VALVE SETTING

USE MEGALUGS AT ALL PIPE JOINTS

ALL D.I.P. TO BE PAINTED
BLUE ON TOP HALF OF PIPE.

ENGINEERING STANDARDS 2022			
REVISIONS		ENGINEERING DIVISION	GATE OR PLUG VALVE SETTINGS
BY	DATE		
S.S.	04-2005	CITY OF POMPAÑO BEACH	DATE: MAY 2022 DWG. NO. 103-1
T.W.	11-2007		
SCALE: N.T.S.			



METHOD "B"

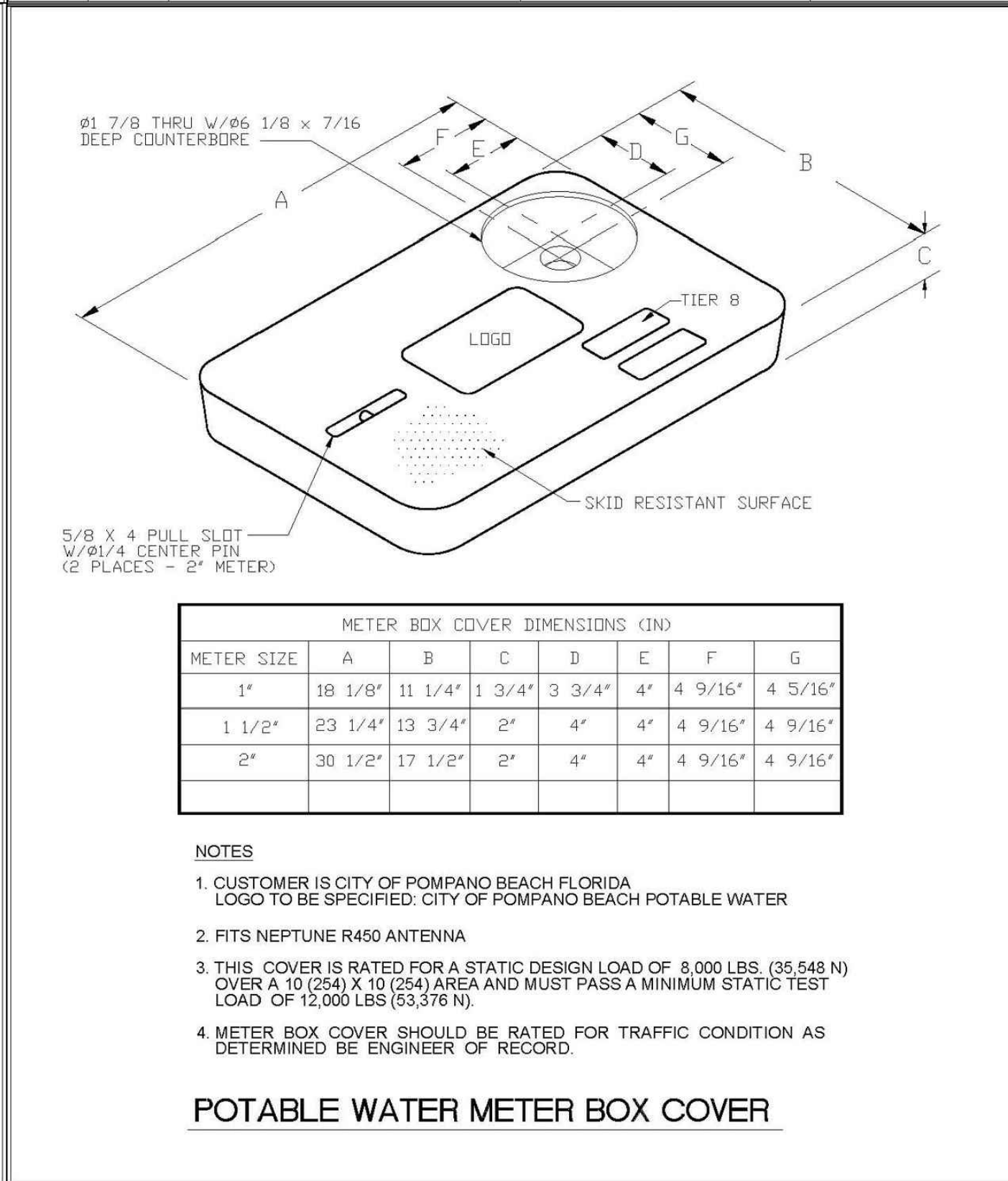
NOTES:

1. WATER MAIN TO BE PRESSURE TESTED AND DISINFECTED ACCORDING TO BROWARD COUNTY PUBLIC HEALTH UNIT REGULATIONS, AWWA, AND MUNICIPAL SPECIFICATIONS IN EFFECT.
2. BACTERIOLOGICAL TESTS ARE TO BE PERFORMED BY THE CONTRACTOR AND AN APPROVED TESTING LABORATORY.
3. REMOVE TEMPORARY CONNECTION AT SADDLE ON NEW MAINS AFTER FILLING AND FLUSHING HAS BEEN COMPLETED AND REPLACE WITH BRASS PLUG
4. PROVIDE ALL NECESSARY THRUST BLOCKS OR OTHER RESTRAINTS.
5. FILLING AND FLUSHING LOCATIONS SHALL BE COORDINATED BY THE CONTRACTOR, ENGINEER, AND CITY.
6. VENT TO ATMOSPHERE SHALL REMAIN OPEN DURING ALL PHASES OF PRESSURE TESTING.
7. AFTER COMPLETION FILL AND FLUSH CONNECTION
8. USE MEGALUGS AT ALL PIPE JOINTS

FILLING AND FLUSHING CONNECTION

ALL D.I.P. TO BE PAINTED
BLUE ON TOP HALF OF PIPE.

ENGINEERING STANDARDS 2022			
REVISIONS		ENGINEERING DIVISION	FILLING / FLUSHING CONNECTION
BY	DATE		
S.S.	04-2005	CITY OF POMPAÑO BEACH	DATE: MAY 2022 DWG. NO. 104-1
T.W.	11-2007		
S.S.	01-2012		
SCALE: N.T.S.			

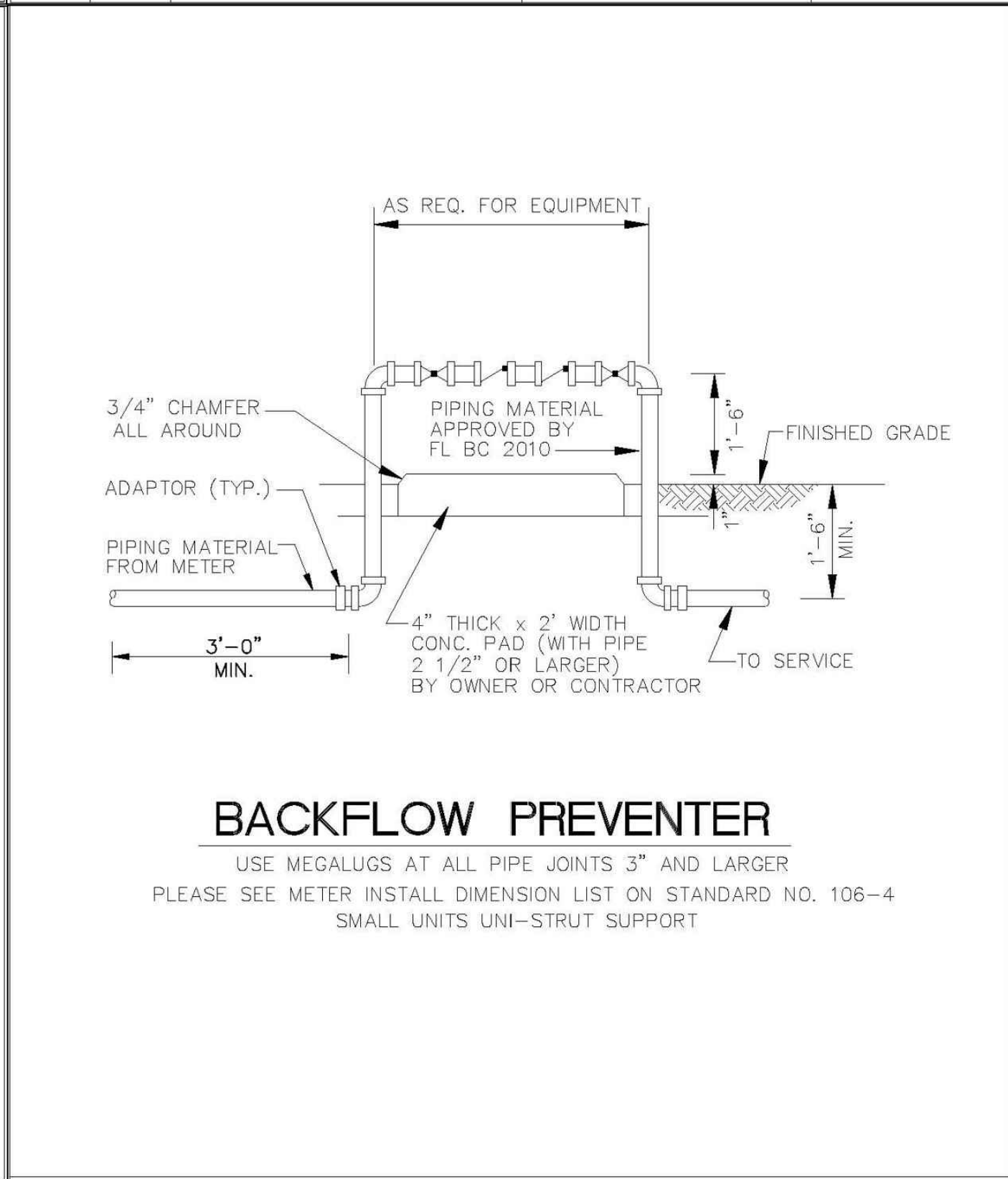


NOTES

1. CUSTOMER IS CITY OF POMPAÑO BEACH FLORIDA LOGO TO BE SPECIFIED: CITY OF POMPAÑO BEACH POTABLE WATER
2. FITS NEPTUNE R450 ANTENNA
3. THIS COVER IS RATED FOR A STATIC DESIGN LOAD OF 8,000 LBS. (35,548 N) OVER A 10 (254) X 10 (254) AREA AND MUST PASS A MINIMUM STATIC TEST LOAD OF 12,000 LBS (53,378 N).
4. METER BOX COVER SHOULD BE RATED FOR TRAFFIC CONDITION AS DETERMINED BE ENGINEER OF RECORD.

POTABLE WATER METER BOX COVER

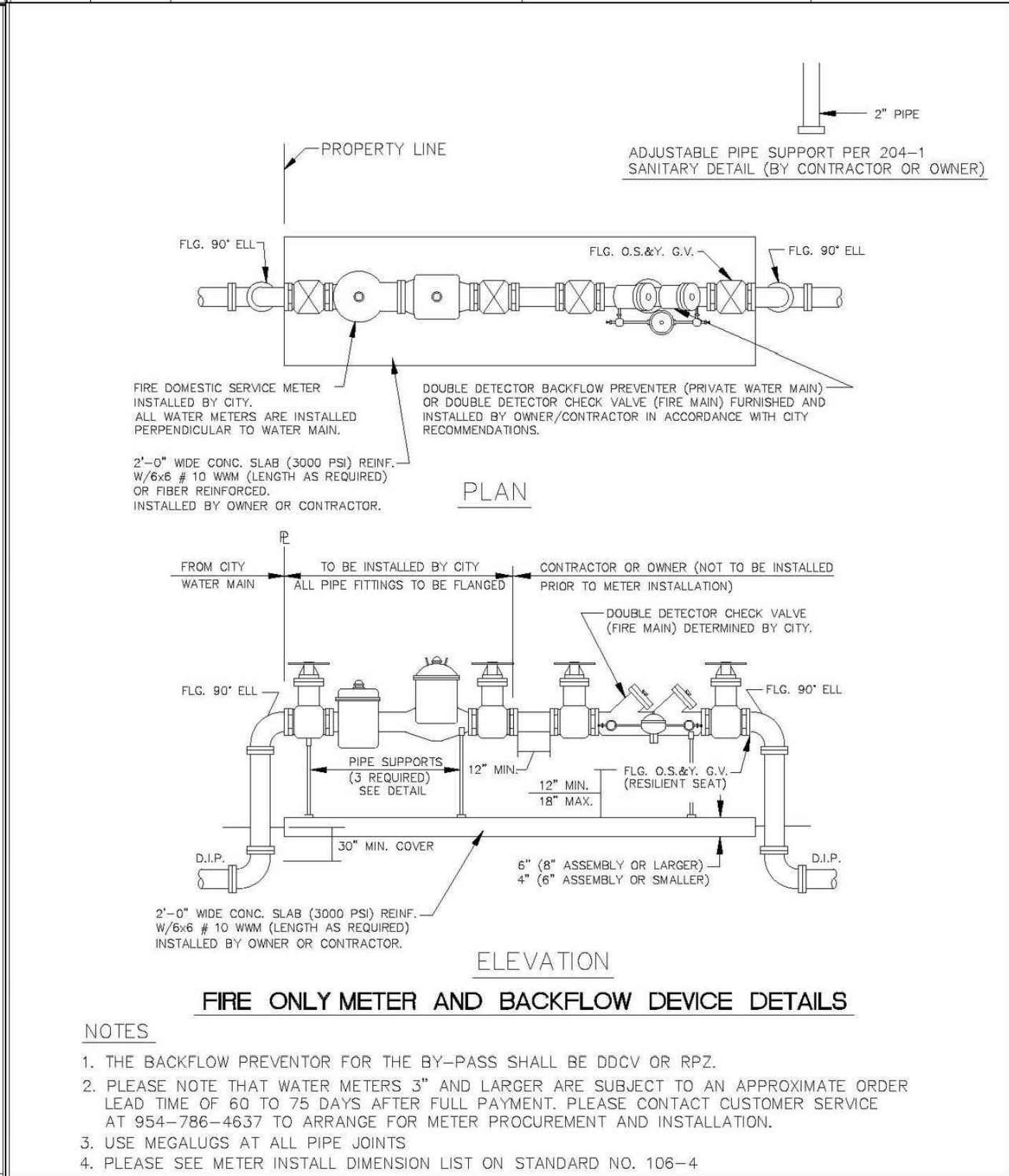
ENGINEERING STANDARDS 2022			
REVISIONS		ENGINEERING DIVISION	TYPICAL METER BOX COVER
BY	DATE		
S.S.	11-2012	CITY OF POMPAÑO BEACH	DATE: JAN. 2022 DWG. NO. 105-3
SCALE: N.T.S.			



BACKFLOW PREVENTER

USE MEGALUGS AT ALL PIPE JOINTS 3" AND LARGER
PLEASE SEE METER INSTALL DIMENSION LIST ON STANDARD NO. 106-4
SMALL UNITS UNI-STRUT SUPPORT

ENGINEERING STANDARDS 2022			
REVISIONS		ENGINEERING DIVISION	BACKFLOW PREVENTER
BY	DATE		
T.W.	04-2008	CITY OF POMPAÑO BEACH	DATE: MAY 2022 DWG. NO. 106-1
S.S.	03-2009		
S.S.	11-2012		
S.S.	01-2013		
SCALE: N.T.S.			



FIRE ONLY METER AND BACKFLOW DEVICE DETAILS

NOTES

1. THE BACKFLOW PREVENTER FOR THE BY-PASS SHALL BE DDCV OR RPZ.
2. PLEASE NOTE THAT WATER METERS 3" AND LARGER ARE SUBJECT TO AN APPROXIMATE ORDER LEAD TIME OF 60 TO 75 DAYS AFTER FULL PAYMENT. PLEASE CONTACT CUSTOMER SERVICE AT 954-786-4637 TO ARRANGE FOR METER PROCUREMENT AND INSTALLATION.
3. USE MEGALUGS AT ALL PIPE JOINTS
4. PLEASE SEE METER INSTALL DIMENSION LIST ON STANDARD NO. 106-4

ENGINEERING STANDARDS 2022			
REVISIONS		ENGINEERING DIVISION	FIRE ONLY METER AND BACKFLOW DEVICE
BY	DATE		
S.S.	09-2011	CITY OF POMPAÑO BEACH	DATE: MAY 2022 DWG. NO. 106-3
S.S.	11-2012		
S.S.	12-2013		
S.S.	11-2016		
SCALE: N.T.S.			

REVISIONS

Jeff H. Iravani, Inc.
Consulting Engineers

1934 COMMERCE LANE, SUITE 5
JUPITER, FLORIDA 33458
TEL: (561) 575-6030
FAX: (561) 575-6088
EMAIL: jh@hellsouth.net
WEBSITE: www.jhinc.com

201 SW 12th Ave

Pompano Beach, Florida

Water & Wastewater
Details

JOB NO. 2208-1411

DRAWN BY JBI

DESIGNED BY JBI

SCALE N.T.S.

DATE 01/28/2023

SEAL

FR # 6986

SHEET NO. C-10